



Your advantages with our products

- » Quick and easy installation due to pre-assembled RAIL Facade
- » Variable adjustment for module frames 28 - 50 mm
- » Modular design simplifies not only the installation but also maintenance and replacement of modules
- » Virtually invisible attachment of the modules results in an aesthetically pleasing appearance
- » Maximum security due to Hybrid-Technology
- » Windproof: no rattling noise
- » Only one tool required: Torx 40
- » Easy grounding through pre-installed pins in the profiles
=> Suitable to connect to lightning protection systems, has been tested for equipotential bonding

*Our warranty conditions apply.
They are available at www.sl-rack.com

Components

RAIL Facade bottom, black anodized

- » Completely pre-assembled
- » Available in 1750 mm for individual module installation in landscape (module length up to 1750 mm) and well as 4575 mm for four panels in portrait (module width 1134 mm)
- » Material: Aluminum (profile), stainless steel (hardware)



VARIANTS

| | |
|---------------------|--|
| Item no. 36121-1750 | RAIL Facade bottom, black anodized - 1750 mm |
| Item no. 36121-4575 | RAIL Facade bottom, black anodized - 4575 mm |

RAIL Facade center, black anodized

- » Completely pre-assembled
- » Available in 1750 mm for individual module installation in landscape (module length up to 1750 mm) and well as 4575 mm for four panels in portrait (module width 1134 mm)
- » Material: Aluminum (profile), stainless steel (hardware)



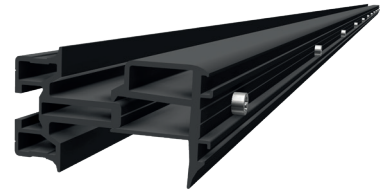
VARIANTS

| | |
|---------------------|--|
| Item no. 36122-1750 | RAIL Facade center, black anodized - 1750 mm |
| Item no. 36122-4575 | RAIL Facade center, black anodized - 4575 mm |

Components

RAIL Facade top, black anodized

- » Completely pre-assembled
- » Available in 1750 mm for individual module installation in landscape (module length up to 1750 mm) and well as 4575 mm for four panels in portrait (module width 1134 mm)
- » Material: Aluminum (profile), stainless steel (hardware)

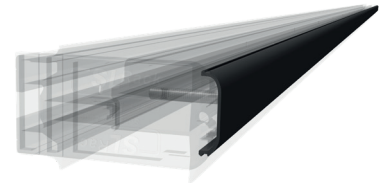


VARIANTS

| | |
|---------------------|---|
| Item no. 36123-1750 | RAIL Facade top, black anodized - 1750 mm |
| Item no. 36123-4575 | RAIL Facade top, black anodized - 4575 mm |

RAIL Facade Cover

- » Conceals the screws of the profile
- » Easy click-mount
- » Ensures an overall aesthetic appearance
- » Material: Aluminum



VARIANTS

| | |
|---------------------|---|
| Item no. 36105-1750 | RAIL Facade Cover, black anodized - 1750 mm |
| Item no. 36105-4575 | RAIL Facade Cover, black anodized - 1750 mm |

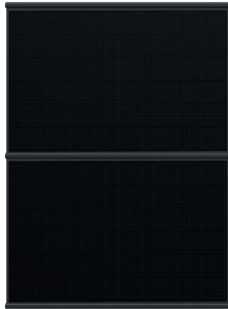
End Cap Facade

Item no. 31106-00

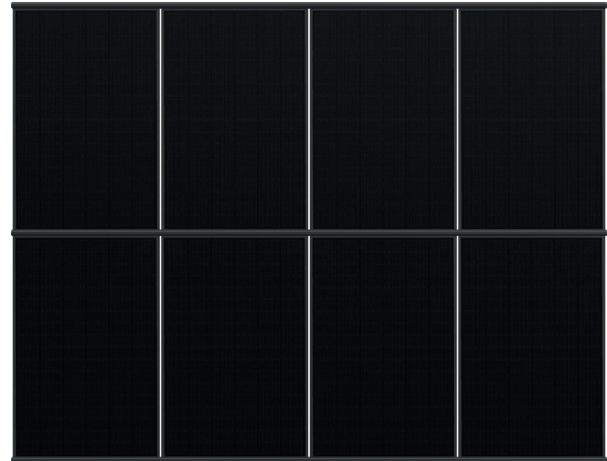
- » Provides a clean finish at the ends of the profiles
- » Integrated height adjustment
- » Kit consists of 2 plastic end caps
- » Ensures an overall aesthetic appearance
- » Material: Plastic



System Variations



*1 module-wide installation in landscape
with RAIL Facade 1750 mm*



*4 modules in portrait
with a profile length of 4575 mm*

Detailed views



Cover, end cap and RAIL Facade center



Cover, end cap and RAIL Facade top



Your opinion is important to us!

We want to make your everyday work easier.
Your praise, criticism and suggestions for improvement help
us to do this. We look forward to your feedback.



SL Rack **Feedback**
[Provide Feedback >](#)



SL Rack **Website**
[Check it out >](#)



SL Rack **YouTube**
[Watch videos >](#)

Find us on



Subject to technical
changes and misprints.
Version 03/2024 V1